

TDS Pro - New for 2006!

TDS Pro for 2006 is now available and recommended for 32-bit, advanced operating systems such as Microsoft Windows XP and XP Pro. The latest TDS Pro 2000 library version number is 2005.1.3 using TDS Pro runtime version 8.0.0.



TDS Pro Update Highlights

Min. display resolution increased to 1024 x 768. Throughout the program, windows and fields have been resized to take advantage of increased display real estate.

You can now load jpeg or gif photos/pictures directly into the TDS Pro graphic field.

New drag-and-drop capabilities added, making it easier for you to make changes and modifications.

New reports added to Data Entry, for example, now you can print a Domain-and-Duty listing.



“Extreme makeover” of the DATA QUERY module - updated windows, new look-and-feel.

Good News

You can upgrade an existing TDS Pro configuration--version 1.0, release date 2003 or later--without having to convert data files (.df1 files). The program will automatically update the data dictionary when the file is opened. You won't even realize it happened.

DATA ENTRY

Browser window, can now move a Duty to a different Domain by drag-and-drop (drag selected Duty and drop anywhere in the Domain list and drop). Can only move one Duty at a time.



Browser window, can now drag-and-drop to move selected tasks to a different DUTY (drag selected items in Task list and drop anywhere in the Duty list field). Can move multiple Tasks to one Duty at a time.

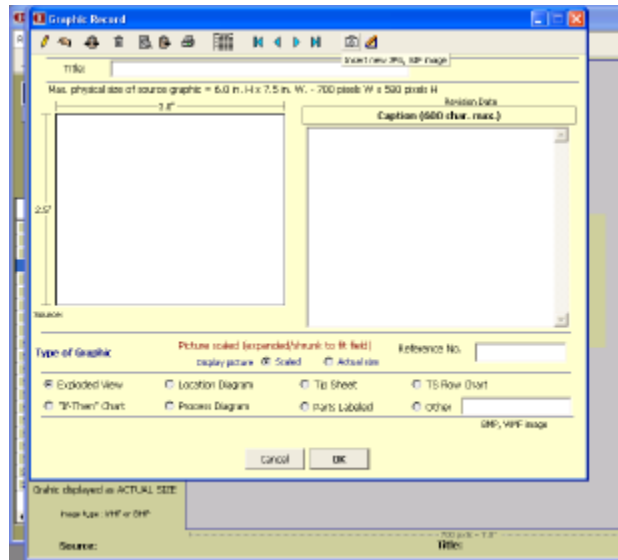
TDS PRO		Domain Titles				No. Duty Title			
2005.1.3		A. MAINTENANCE				2 Hydraulics			
SF HART.DF1						3 Pumps			
DATA ENTRY						4 PLCs			
Browser						5 Electrical Systems / Components			
						6 Instrumentation			
						7 Conveyors			
		1 Domain Records in file				27 Duty Titles in Selection			
Task	Lrg Difficulty	Frequency	Priority	Lrg Sequence	Status	Seq. No.	#JAs	Critic	
11 Adjust photo eyes	NR	NR	NR	Not Rated	No data at this time	0.00	0	NR	
12 Adjust proximity switches	NR	NR	NR	Not Rated	No data at this time	0.00	0	NR	
13 Change motor rotation leads (480 VAC)	NR	NR	NR	Not Rated	No data at this time	0.00	0	NR	
14 Program VFD	NR	NR	NR	Not Rated	No data at this time	0.00	0	NR	
15 Replace control panel components (fuses)	NR	NR	NR	Not Rated	No data at this time	0.00	0	NR	
16 Replace/install 3-phase motor (480 VAC)	NR	NR	NR	Not Rated	No data at this time	0.00	0	NR	
17 Replace/install DC power supply	NR	NR	NR	Not Rated	No data at this time	0.00	0	NR	
18 Replace/install input device	NR	NR	NR	Not Rated	No data at this time	0.00	0	NR	
19 Replace/install overload protection	NR	NR	NR	Not Rated	No data at this time	0.00	0	NR	
20 Replace/install power disconnects	NR	NR	NR	Not Rated	No data at this time	0.00	0	NR	

Select **Graphics Browser** and **Graphics Record** windows, can now load jpeg or gif files from a local or network drive. Click on icon in window toolbar, navigate to the directory where you have stored jpeg or gif files (e.g., "My Pictures"), and select the file. The **camera icon** is for loading a new picture. To replace an existing picture, click on the **pencil icon**.

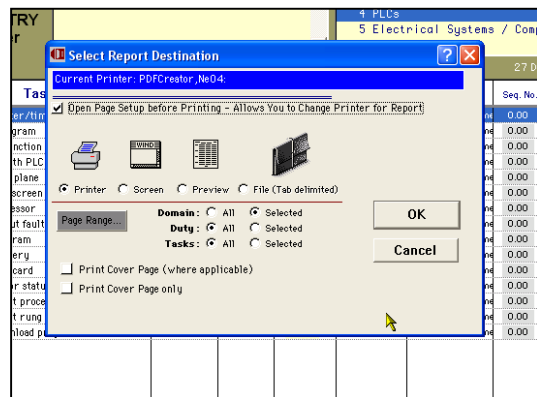


Maximum picture size: 580 pixels H x 700 pixels wide.

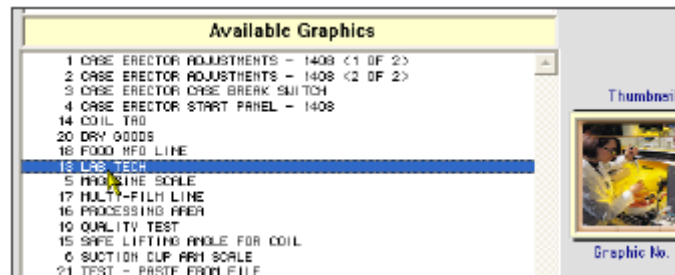
The **Select Graphics Browser window** now displays all graphics actual size.



Report Destination window, user can enable an option When Printer is selected in Page Destination window, add'l Page Destination window opens, which will allow user to select different printer (e.g., PDF writer).



Link Job Aids window, now displays thumbnail view of linked graphics (Job aids) and available graphics.



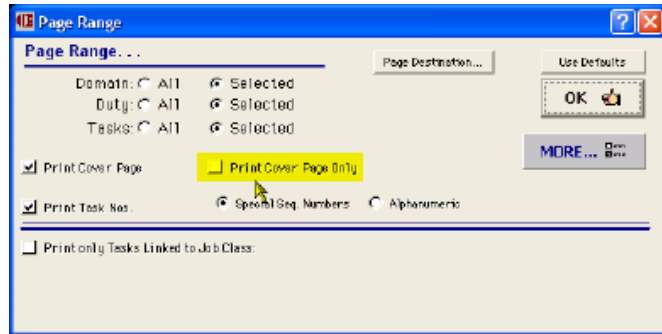
Domain Graphic and Duty Graphic windows also allow jpeg or gif files to be loaded from disk (buttons on Toolbar added). Domain Graphic window allows user to view picture scaled to fit window or actual size (Toolbar toggle button). Duty and Domain picts automatically calculate graphic title as picture title

New Report - File Status - Domain Listing - provides a list of Domains in the file and a count of total Duty areas and total Tasks in the Domain.

New Report - File Status – Domain-Duty List - Provides list of Duty Titles for @ Domain, and count of tasks in @ Duty. (If no Duties are ID'd for the Domain, report will list "NO DUTY ID'd".)

New Reports menu - Separated the standard "Reports" menu into 4 individual menus: Status Reports, Duty-level Reports, Task Reports, Special Task Reports. [Special Task Reports still remains as a hier. menu in the Task Reports menu.]

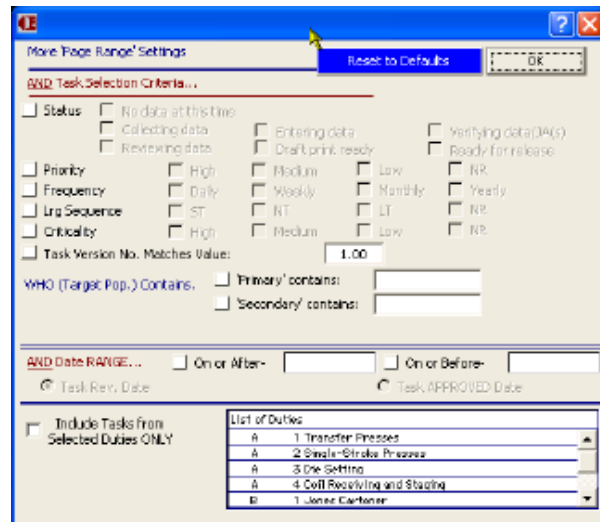
Added feature "**Print cover Page only**" to Page Range window. Now you can reprint just the cover page for a report (where applicable). Of course you still use the "Custom Cover Page" feature to Design your own report cover.



Progress Log Module

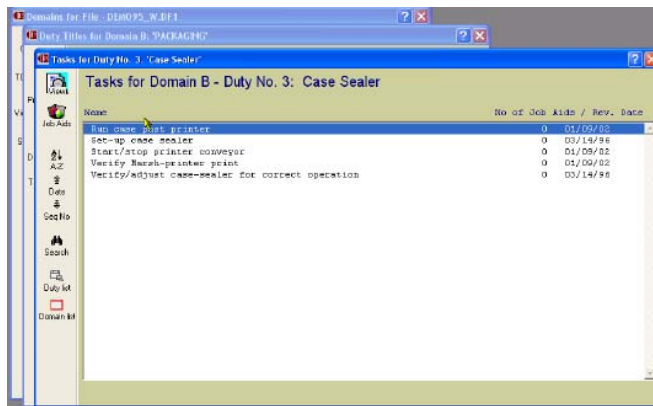
Windows have been resized to allow lists to display more lines, more columns. Many windows are also re-sizeable.

Reports – applicable reports now allow more precision on what Tasks and/or Duties to include on the report. You can get to the "More Page Range Settings" window (right) clicking on the *checkbox icon* located on the window toolbar (above).



Data Query Module

This module gets a fresh, updated look. One click on a list item takes the user to the next window. A Toolbar, located on the left side of each window, allows user easy access to data via point-and-click. Window titles are clearly identifiable and easy to read. Users should have no problem navigating through the data.



TDS Tools

Check for orphan Job-to-Tasks assignment records - routine now checks for empty or null job-to-task assignments. If empty, user has option to purge / delete records.



Data File Tools - Special Data Fixes – new command added: *Fix Domain-Duty Connections*. This will make sure each Duty is linked to its correct parent Domain.



Bug Fixes of Interest

Bugs! TDS Pro doesn't have bugs! Well, OK, we admit that we and users have found some things occurring that we didn't intend to happen with the program. We're constantly using and testing the program and often fix things that users have never encountered.

You may or may not have experienced any anomalies. Nevertheless, we're including a list of some of the more annoying things we've fixed to make the program more enjoyable for users.

We made more fixes than what's listed here – but that's our secret!

Data Entry Module

Tool Record window could be closed while in enter data mode, causing 'enter data' mode to remain in effect (disabling windows).

Duty Graphic window - multiple pages of Duty picture would print.

File Status Reports >> Count of Ratings x Domain - calculated wrong numbers; fixed report to calculate correctly.

Progress Log

Find Employees routine which opened Employees window and allowed user to choose whether to log Skill Verification dates or PL dates for selected employees. List was not being built correctly when user switch from one window to the other (from Verification window to Log TRG/QUAL/RE_QUAL dates).

Data File Tools

Data File Repair Tools window – Special Data Repairs>>Fix Task Variables - procedure did not reload & connect task to it parent Duty; re-wrote routine to include proper reloading of parent Duty into current record buffer.

TDS Pro is available exclusively from:
Performance technology Group
Nashville Tennessee * 800.867.2022
info@performancetechnology.com

Technical Data

- Available in multi-user versions for Windows and Mac OS. Cross-platform data file compatibility.
- Can support up to max. 255 simultaneous users; 3.0+gb data file capacity.
- Stores clipboard, BMP, WMF, JPG, GIF graphic files in 32-bit color.
- Number of records limited only by data file size.
- Network-ready; compatible with most LANs, including Novell, NT.

For more information:
www.performancetechnology.com * www.tdspro.net